



Laminate worktops, splashbacks and upstands: Installation and maintenance

IMPORTANT NOTE

This information presents the most effective ways of fitting and installing Axiom by Formica® laminate worktops. Before you do any work to your new Axiom laminate worktop, splashback or upstand, please ensure you are completely satisfied with the product by checking for damage or defects. These guidelines are intended to help you achieve the best possible results.

Important message to the installer: this installation and maintenance sheet must be left with the end consumer, as the guarantee is only valid if guidelines as described in the installation sheet have been followed.

EQUIPMENT CHECKLIST

Before fitting your new Axiom laminate worktop, you should check that you have the following list of equipment available.

Cutting to size you will need...

Measuring tape, pencil, portable power saw (if available), straight edge (non-flex), two 'G' clamps and a fine toothed hand saw. A portable hand router can also be used to produce a cleaner cut edge, ideal for when the cut edge is to be laminated.

Cutting internal apertures you will need...

Measuring tape, pencil, electric drill, 12mm drill bit, jig-saw.

Edging Axiom worktops you will need...

25mm paint brush, PVAc adhesive, junior hacksaw, electric iron, trimming machine (if available), hand plane and 250mm smooth file.

Fitting the splashback you will need...

Bostik pad, 1440 adhesive, 25mm paint brush, 2-3mm packing pieces, plumb line, silicone sealant and a silicone gun.

Cutting your Axiom upstand you will need...

Measuring tape, pencil, a sharp fine toothed (10-12 teeth per 25mm) hand saw, a block plane, sandpaper and sanding block, a flat fine cut file, silicone gun, silicone sealant, wall panel type adhesive.

MEASURING

Marking can be done with a soft pencil either on the face of the worktop, if using a hand saw, or on the back if using a power saw. Before cutting check measurements.

PREPARATION

The worktop should be adequately supported during all cutting, drilling or sawing operations. All cutting tools should be sharp and safety goggles should be used whenever cutting laminated boards.

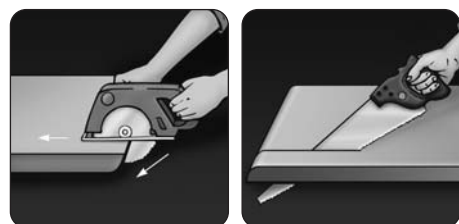
Splashbacks

Prior to fitting, ensure that the wall is flat by holding a straight edge against it. Bostik pads could cope with a deflection of 3-4mm. If the wall is uneven it is better to screw fix timber grounds first. Check that all power tools are electrically safe before use and that all cutting tools are sharp.

Upstands

Prior to fitting, ensure that the wall is flat. Make sure that the worktop is flat and fitted correctly. Make sure the wall has no loose plaster or dirt.

CUTTING



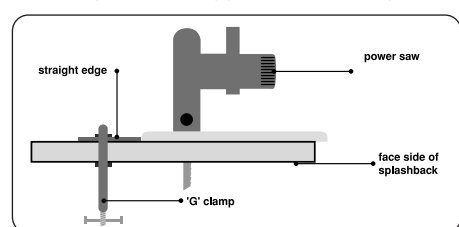
Axiom laminate worktops can be cut a number of ways. The best results are achieved when the worktop is cut slightly oversize by 5mm, using either a portable power saw (with the decorative side face down) or with a hand saw (decorative side face up).

To finish the edge use a portable hand router, straight edge and 'G' clamps. Clamping the straight edge of the worktop, either with the decorative side

face up or down, but always ensuring the cutter will enter at the postformed edge, will result in a perfectly straight chip-free cut. It is difficult to maintain a totally chip-free finish when using a hand saw, without having to tidy it up afterwards. If the sawn edge is to be laminated, it is advisable to use a portable router.

Splashbacks

With the panel well supported, mark the position of the cut on the reverse side and clamp a straight



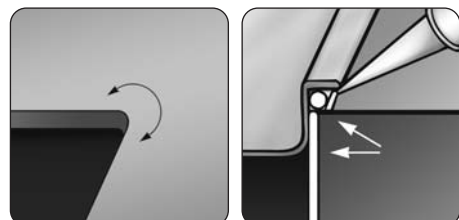
edge in place. Remember to allow for the bed of the power saw when positioning the straight edge. Using the straight edge as a guide position the saw against it and cut through the board.

Note: Most laminates and particularly Brushed Aluminium have a one way directional pattern. To ensure continuity when adjoining splashback panels side by side, always cut and fit so that the pattern is consistent with the way in which it came out of the sheet.

Upstands

Measure the worktop, or wall, you want your upstand to be fitted to. Mark the upstand on the face at the correct length. Before cutting check your measurements. With a hand saw start to cut the upstand with the laminate face side up and at the profiled edge. Keep the saw at a low angle. Once cut, the end of the upstand can be finished off with a block plane or a piece of sandpaper and sanding block; this will give a good finish to the cut edge.

MAKING CUT-OUTS



Any cut-outs should be carefully measured and marked. Then working from the decorative surface, drill through all the corners using the largest diameter drill possible, since sharp internal corners can lead to cracks forming in the laminate surface.

Ensure that there is a minimum radius of 10mm at each corner. Cut-outs can once again be made using the portable hand router, similar to the method

described above, however, a jig-saw can be used providing the four corners have been pre-drilled using a 12mm drill bit.

Mark out the area to be cut on the face side of the worktop and drill a hole in each of the four corners. After drilling, turn the worktop over and mark a straight line from one edge of a hole to another. Then using a jig-saw with a fine toothed blade, cut from hole to hole. Ensure the piece to be cut away is well supported on the last cut. After the cut-out has been made, try the sink or hob for size.

To ensure that your Axiom worktop remains in excellent condition, **it is essential that all exposed edges of the chipboard are sealed** with a silicone sealant or contact adhesive. For a sink cut-out, the exposed raw chipboard should be treated with a waterseal, varnish or "red lead" paint. In addition to this, we would also recommend the use of a purpose made gasket, often supplied with the sink or silicone sealant applied to the perimeter of the sink prior to installation. The hob cut-outs can be protected in the same way but it is also advisable to cover the exposed edges and the edge of the laminate with aluminium foil, to prevent the heat affecting the cut-out.

Splashbacks

Whenever a cut-out is made within the splashback, always ensure that the internal corners are radiused, this will prevent stress cracking. Use either a portable hand router or a combination of an electric drill and a jig-saw. Mark out the area to be cut on the face side and drill a hole in each of the four corners, turn the board over and mark a straight line from hole to hole. Using the jig-saw with a fine toothed, upward cutting blade, cut along the lines.

FIXING

Splashbacks

Once cut to size the splashback can be fixed using either a Bostik pad system or a wall panel adhesive such as Liquid Nails, Gripfill or Evode wall panel adhesive.

Please follow the manufacturer's instructions as described on the tubes, when using the wall panel adhesive.

Regardless of which system you choose it is advisable to position the adhesive pads or beads at centres that do not exceed 600mm. On a 600mm high panel, perimeter fixings will be adequate. To provide a seal against the possible effects of moisture, the panel should be suspended up from the worktop by 3mm until the adhesive takes hold, this void can then be filled with silicone sealant.

The splashback can be used in areas around the hob, however it is necessary to check with the hob manufacturer as to the minimum distance to which the splashback can be fitted in relation to gas jets. There should be no contact between hot cooking utensils and the surface of the splashback.

Upstands

Once cut to size and edged (if required) the upstand can then be fixed. The upstand must be fixed to the wall which your worktop backs on to. Fix the upstand with wall panel adhesive. Follow the adhesive manufacturer's instructions to ensure a good bond. The upstand can then be sealed using silicone sealer. Seal the area where the upstand meets the worktop and where the upstand meets the wall. Again follow the silicone sealant manufacturer's instructions for correct use. Please note when fitting Axiom upstands behind a gas hob, the upstand must be no less than 50mm away from the flame.

INTERNAL/EXTERNAL CORNER DETAILS FOR SPLASHBACKS

When fitting up to an internal corner, it is once again advisable to leave a small gap of 3mm which can be filled with a matching silicone sealant, this will allow for expansion and contraction due to climatic changes.

At the external corner detail, the MDF edge would be visible, therefore matching laminate can be applied to provide a finish. Follow the instructions as described in 'EDGING OF WORKTOPS'.

SEALING OF HOLES FOR SERVICES

Where pipes are to be brought up through the worktop, a 2-3mm allowance for expansion/contraction should be maintained around the pipe. The void can then be filled with silicone sealant.

EDGING OF WORKTOPS

All exposed edges should be finished with matching laminate, as supplied with every Axiom laminate worktop.

Ensure that the cut edge is flat, clean and dust free. Apply a proprietary adhesive, ideally PVAc, to the edge of the worktop. It can be applied using a 12-25mm paint brush, directly to the chipboard edge. The edging strip should then be placed sanded side down onto the wet adhesive. Ensure that there is sufficient overhang of edging on both the face and underside of the worktop.

Using an electric iron, set on medium, apply pressure to the edging strip and hold in place for approximately 5-10 seconds, then slowly move along the strip and repeat. Ensure that any deposits of glue on the surface of the worktop or the decorative face of the edging are immediately wiped off with a clean damp cloth. Leave for at least 1 hour before removing excess edging strip. To remove excess edging strip use either a portable trimming machine or a sharp block plane. Final finishing can best be achieved by using a 250mm smooth file.

Splashbacks

In parts the top edge of the splashback could be visible, in these instances matching laminate can be applied to provide a matching finish. The edging strip can be purchased from our **Axiom Distributors**, for details telephone **0191 259 3478**.

However, if you are an experienced DIY enthusiast these guidelines should be followed: PVAc adhesive should be applied directly to the edge of the splashback using a 25mm paint brush. The edging strip can then be placed sanded side down into the wet adhesive. Ensure that there is sufficient overhang of edging on both the face and reverse side of the board. (Please refer to worktop edging instructions above, for detailed trimming and finishing instructions).

Upstands

If the upstand requires edging, use the matching laminate strip that has been supplied with your worktop. Use a PVAc adhesive. Follow the adhesive manufacturer's instructions to ensure a good bond. Once the edging has been bonded you can trim off any overhang with a block plane and a fine flat file. (Please refer to worktop edging instructions above, for detailed trimming and finishing instructions).

GENERAL

Axiom worktops are rigorously tested in line with British and European standards to ensure that they will meet the exacting requirements of any modern kitchen. Every Axiom worktop therefore incorporates specific features which make it highly resistant to heat, impact, scratching and moisture. Our decorative laminates are tested to a temperature of 180°C. Boiling water and cooking splashes will therefore do no harm to the surface of the worktop. All Axiom worktops are effectively sealed to protect the core from moisture along the front and back edges.

Laminate worktops, splashbacks and upstands: Installation and maintenance

CLEANING

General cleaning of the surface requires only a damp cloth and a mild detergent or non-abrasive cleaner diluted in warm water. Abrasive scouring powders, creams and even polishes should all be avoided. If the worktop has a textured surface, a soft nylon nailbrush can be used to ensure a more thorough cleaning. Potentially persistent stains should be removed immediately. For gloss worktops, buff the surface after cleaning with a soft cloth.

THINGS TO DO AND THINGS TO AVOID

	THINGS TO DO	THINGS TO AVOID
HEAT 	<p>To prevent damage from hot objects, use heat resistant mats on the surface of the worktop. Always use ashtrays for cigarettes.</p>	<p>Never place objects from the oven or hob directly onto the laminate surface since this may lead to blistering. Care should also be taken with hot irons and cigarettes.</p>
SCRATCHING 	<p>Always use a chopping board for preparing food.</p>	<p>Some crockery items, kitchen utensils and other objects sliding across your worktop will produce fine scratches in the laminate. However try to avoid sliding rough based objects across the surface. Never cut foodstuffs directly on the laminate surface.</p>
MOISTURE 	<p>Wipe spilt liquids away from joints and cut-outs immediately. Ensure that all inset appliances are properly sealed with a suitable waterproof silicone sealant.</p>	<p>Moisture will not harm the laminate surface itself but it is advisable to wipe away any spillages as soon as possible. The critical areas are around joints and cut-outs.</p>

MARKS

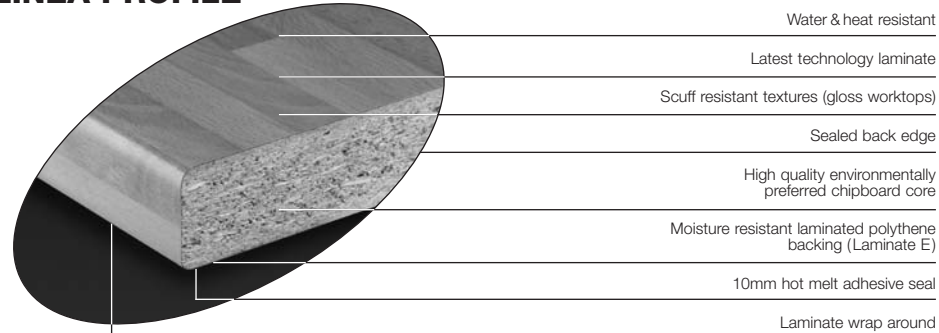
STAIN OR MARK	DRY CLOTH OR DUSTER	DAMP CLOTH	WARM WATER & DETERGENT	NON ABRASIVE CLEANER	WHITE SPIRIT	NAIL POLISH REMOVER
FOODSTUFFS						
tea		■	■	■		
coffee		■	■	■		
milk		■	■	■		
fruit juice		■	■	■		
curry		■	■	■		
red wine		■	■	■		
vinegar		■	■	■		
lemon juice		■	■	■		
beetroot		■	■	■		
GENERAL HOUSEHOLD ITEMS						
dust or light dirt	■					
soap residue		■	■	■		
oils-mech/eng/veg		■	■	■		
paint-water based			■	■		
paint-solvent based					■	
dyes-washable			■	■		
dyes-permanent					■	■
shoe polish					■	
wax crayon					■	
biro/pen			■	■		
chalk		■	■	■		
lipstick			■	■		
nail varnish						■
bleach		■	■	■		
OTHER						
fingermarks		■	■	■		
blood			■	■		
nicotine			■	■		

TABLE OF SIZES AND WEIGHTS

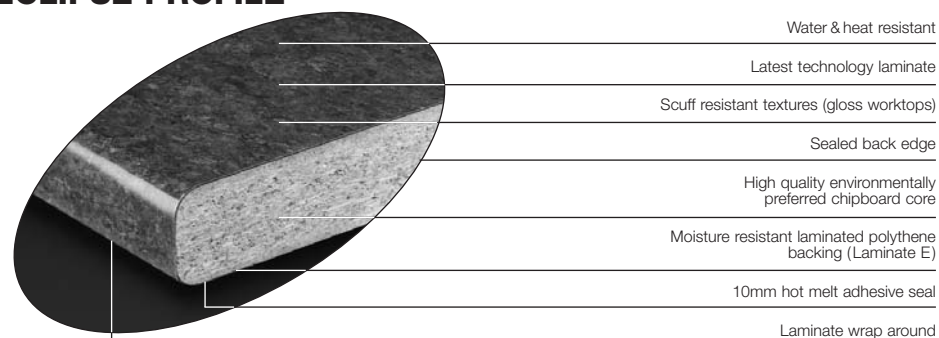
WIDTH (mm)	LENGTH (mm)	
		4100
600	62 kg	55 kg
665	63 kg	56 kg
900	90 kg	79 kg

NB: Laminate worktops are 40mm thick

LINEA PROFILE



ECLIPSE PROFILE



LIFETIME GUARANTEE OF QUALITY

Formica Limited offers a lifetime guarantee for any Axiom laminate worktop that is shown to be defective in either materials or manufacture only and will undertake to replace any worktop with a manufacturing defect. Due to the inherent properties of gloss laminate, Formica Limited does not accept any responsibility for the performance of the decorative laminate surface. It is therefore imperative that this Axiom Installation and Maintenance leaflet is referred to both before and after installation, as misuse of all laminates may affect the appearance of the work surface, particularly with regard to scratching (see table 'Things to do/ Things to avoid').

Please note: the Axiom laminate worktop lifetime guarantee becomes void once the postformed edge is cut off. When applying additional metallic effect edging, a qualified edging fabricator should be used to reduce any possible quality problems.

Axiom splashbacks and upstands carry a 10 year guarantee whereby Formica Limited will undertake to replace any splashback or upstand found to be defective in either material or manufacture for up to 10 years from the date of installation. Due to the inherent properties of the Brushed Aluminium (PP8951 MB) and Aluminium Square (PP8951 SQ) splashbacks, which are prone to scratching, extreme care should be taken on installation. Formica Limited does not accept any responsibility for any scratching of this product. For further information on Axiom edgings or fitting your Axiom splashback please contact the Fabrication Support Unit on 0191 259 3411/3483.

PLEASE NOTE

This Axiom Installation and Maintenance leaflet is for guidance only. Formica Limited cannot accept responsibility for final fitting of your worktop. Colour and surface finish should be checked for compatibility before fitting takes place. Formica Limited will not accept any claims for re-fitting costs resulting from mis-match of colour or surface finish.